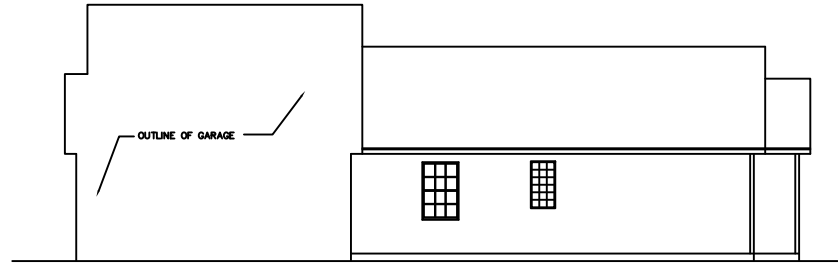


LEFT SIDE ELEVATION OF LEFT UNIT
SCALE: 1/8"=1'-0"



RIGHT SIDE ELEVATION OF LEFT UNIT
SCALE: 1/8"=1'-0"



REAR ELEVATION
SCALE: 1/8"=1'-0"



FRONT ELEVATION
SCALE: 1/4" = 1'-0"